

Fish Passage Evaluation Data Sheet

Stream: Sfk Murderers Creek Head-cuts

Road # n/a Passage ID: _____

Coordinates:

Upper: Lat 44° 14.371 Long 119° 19.709

Lower: Lat 44° 14.418 Long 119° 19.710

Date: 5/9/17 Crew: Neal

General

Type: Culvert | Irrigation | Other Dam | **Head-cut**

Rating: **RED** | GREY | GREEN

Fish bearing: No | below only | **above** | potentially

Impassable | adults only | juveniles | meets criteria

Jump height to Pool: 1.3 ft, 2nd jump: 1.2 ft

Depth of jump Pool: 0.5 ft Length of Jump Pool: 7.5ft

Water Velocity:

Above: 10ft / 98.0 seconds = 0.1 fps (very flat gradient)

Below: 10 ft / 22.0 seconds = 0.4 fps

Stream Substrate size: 5 mm (Meadow silt)

Potential for debris blockage: **Yes** | No

Stream Slope

Above: rise 0.2 ft / run 100.0 ft = 0.2 %

Below: rise 0.6 ft / run 100.0 ft = 0.6 %

Bankfull Width/Active Channel Width

Bankfull Width at top of water fall : 3.1 ft

Two bankfull width measurements above and three below barrier
 $2.2 \text{ ft} + 2.6 \text{ ft} + 1.8 \text{ ft} + 1.9 \text{ ft} + 2.2 \text{ ft} / 5 = 2.1 \text{ ft}$

Wildlife

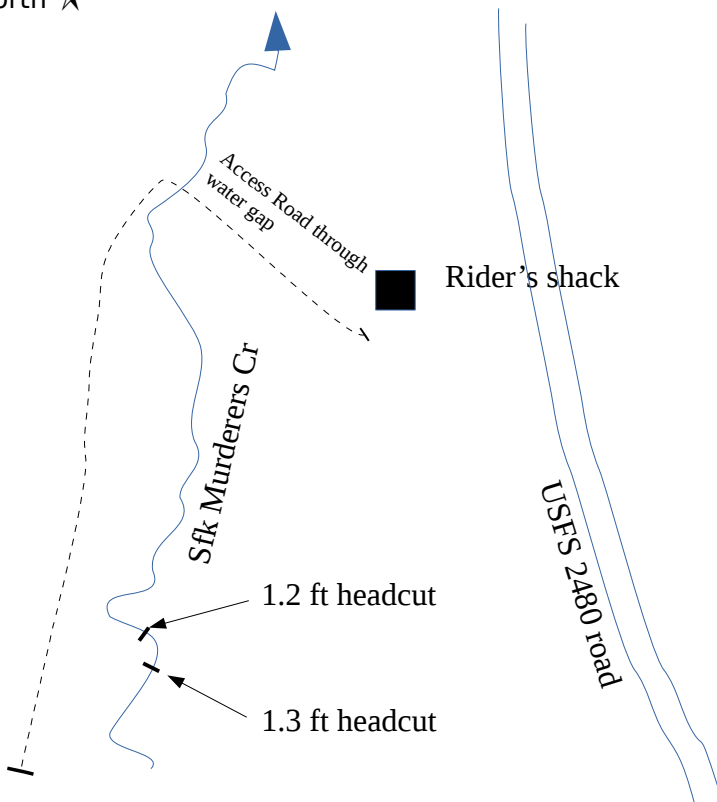
Beaver Presence: Yes | **No**

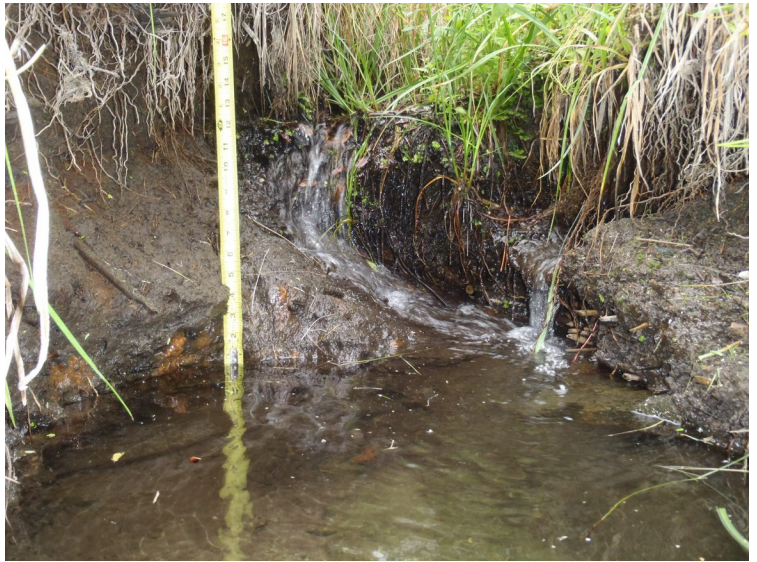
Beaver Created Obstruction: Yes | **No**

Additional miles accessed: 0.8 mi

Sketch

North 





Sfk of Murderers Cr upper headcut. A 1.3 ft high passage barrier